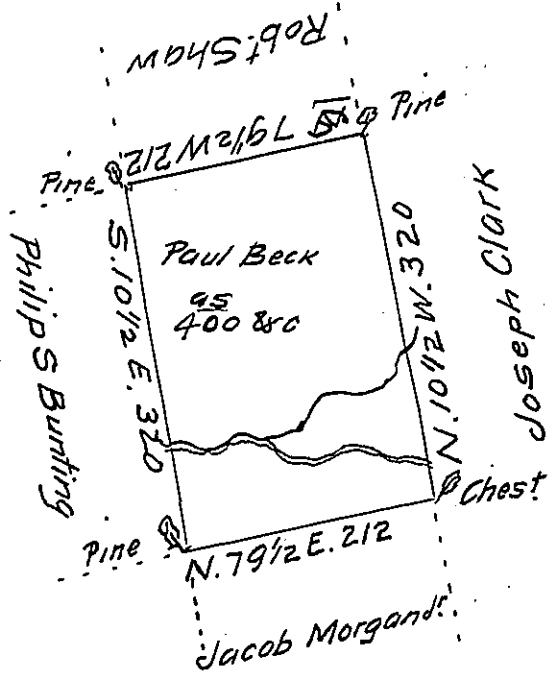


Hazle  
Luzerne



A Draft of a tract of Land called \_\_\_\_\_ situate on the waters of  
 Catawissey Creek in the County of Northum<sup>d</sup> or Northamp<sup>d</sup> Con  
 taining Four hundred acres & allowance surveyed for Paul Beck  
 the 18<sup>th</sup> day of October 1793 by virtue of a warrant doted the 10<sup>th</sup> day  
 of July 1793

To Daniel Brodhead Esqr.  
 Surr<sup>t</sup> Genl.

by W<sup>m</sup> Gray D.S.

IN TESTIMONY that the above is a copy of the original remaining on file in  
 the Department of Internal Affairs of Pennsylvania, made  
 conformably to an Act of Assembly approved the 16th day of  
 February, 1833, I have hereunto set my Hand and caused  
 the Seal of said Department to be affixed at Harrisburg,  
 this tenth day of July 1911

*Henry Howell*  
 Secretary of Internal Affairs.